

# Funding Newsletter



February 2024

We are pleased to share with you lots of small grants available this month, and small grants means much easier paperwork. If you and your school do nothing else this month sign up personally for CSSC and get some free trees from the Woodland Trust!

I know talking to lots of schools resources for RE are hard to fund so there is a great link here for £600 towards purchasing RE resources! Please do get in touch if you have any questions or to share any success you have had with funding.

Antony



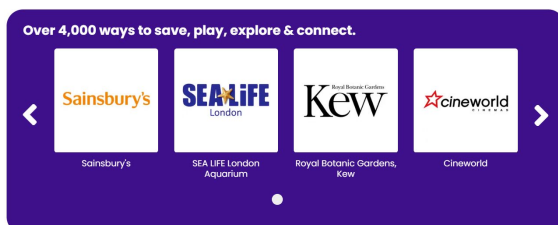
[antony.witheyman@iflt.org.uk](mailto:antony.witheyman@iflt.org.uk)

## CIVIL SERVICE SPORTS CLUB

Did you know as a teacher you can apply to be a member of the Civil Service Sports Club (CSSC). CSSC provide free days out and exclusive discounts on sports, fitness, retail and leisure activities for only £4.99 a month.



The main perks for me are free family entry to all English Heritage sites and free entry to Kew Gardens as well as cashback on Theatre Tickets and Gym Memberships.



When you consider family membership of English Heritage is £120 on its own, this is a great perk for being a teacher!

[Learn more about the Civil Service Sports Club...](#)

## UNIVERSAL MUSIC UK SOUND FOUNDATION

The Universal Music UK Sound Foundation (UMUKSF) has launched a new funding round to enable schools across the UK and Ireland to apply for grants of up to £1,500 towards the cost of musical resources.



The UMUKSF School Awards will provide funding for schools teaching the national curriculum to improve their music department through the purchase or upgrade of musical instruments and equipment.

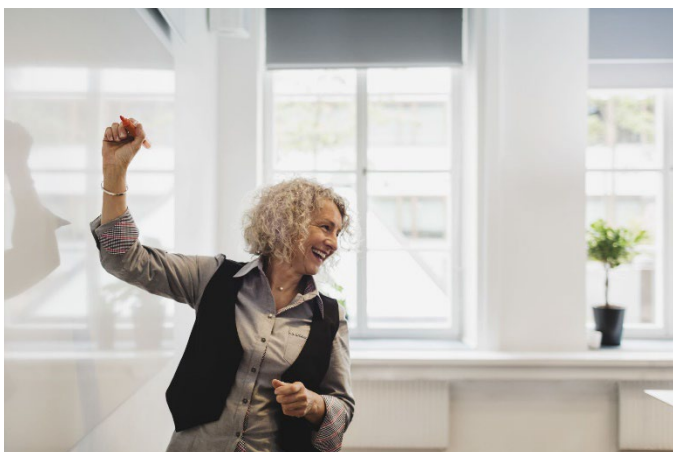
[Learn more about Universal Music UK Sound Foundation...](#)

UNIVERSAL MUSIC UK  
**sound**  
foundation

### THE JERUSALEM TRUST

The Jerusalem Trust is currently accepting grant applications to its Small Grants to Schools Scheme for the Spring Term 2024.

The grants can be used to support the purchase of teaching resources for Christianity in Religious Education in state primary and secondary schools in England and Wales.



Each grant cannot exceed £600, and applications can be submitted at any time. The grants can be used to purchase various teaching resources to support the teaching of RE in State Schools.

---

[Learn more about The Jerusalem Trust...](#)

---

### THE BRITISH TRUST FOR ORNITHOLOGY

BTO Equipment Donation Scheme (EDS) supports young people across the UK by supplying them with equipment to make the most of their birdwatching experiences and enabling them to further develop the scheme.



---

[Learn more about The British Trust for Ornithology...](#)

---

### THE FOYLE FOUNDATION: DRAMA, THE ARTS, BOOKS

State schools can apply for funding to update their Arts and Drama facilities such as Lighting and Staging.



All Schools can apply for The Foyle Library Scheme to update the books and facilities in their library.

---

[Learn more about The Foyle Library...](#)

---

### ROYAL SOCIETY OF CHEMISTRY - PRIMARY SCIENCE FUND

Tackle teaching challenges in primary science. Get to know and share knowledge with your fellow science teachers and technicians. Develop your leadership skills and strengthen your local network.



If you have an idea that will make an impact on science teaching where you are, the Primary Science Teaching Empowerment Fund can help cover your costs up to £600.

---

[Learn more about The Royal Society of Chemistry...](#)

---



## THE OUTDOOR GUIDE FOUNDATION

The Outdoor Guide Foundation has a simple aim; to make the outdoors more accessible for all – particularly children.



For schools planning or wanting to set up an outdoor learning space or simply get kids outside in all weathers, they should first consider the need for proper clothing – waterproofs and wellies.



Their goal is get 10 sets of wellies and waterproofs to every state primary schools in the UK, all 20,000 of them!

---

[Learn more about The Outdoor Guide Foundation...](#)

---

## WOODLAND TRUST

The Woodland Trust provide 1000's of trees for schools and communities so that everyone has the opportunity to plant a tree.



The UK needs millions more trees to reach its 2050 carbon net-zero target. By digging in with the Woodland Trust, you'll help bring us nearer this important goal.

You can choose from a variety of trees and hedgerows to enhance your school grounds, or the wider community.



---

[Learn more about The Woodland Trust...](#)

---